

COMMUNITY PROFILES: 2000

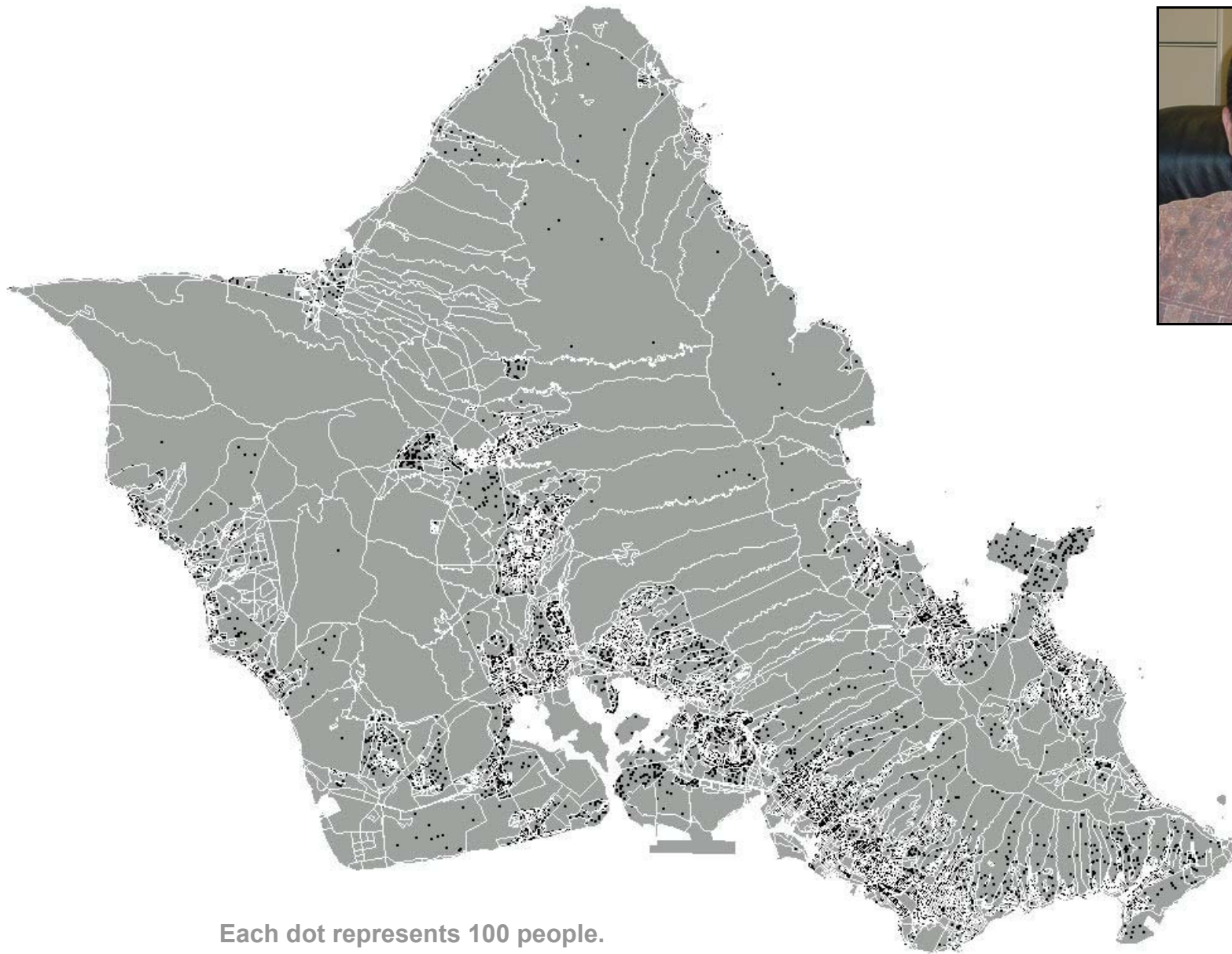
by Development Plan Area

- Profile 1** General Demographic Characteristics
- Profile 2** Selected Social Characteristics
- Profile 3** Selected Economic Characteristics
- Profile 4** Selected Housing Characteristics

DEPARTMENT OF PLANNING AND PERMITTING
CITY AND COUNTY OF HONOLULU
Jeremy Harris, Mayor



MAY 2003



Each dot represents 100 people.

POPULATION DISTRIBUTION

Source: Year 2000 Census



Community Profiles is an important resource for many activities. It can provide justification and documentation for grant applications. It can help direct marketing strategies for various types of businesses or regions of Oahu. It can help complete economic feasibility studies. And of course, it is an excellent source of information for general land use and community planning.

For example, most of us live in the Primary Urban Center, yet it has the smallest average household size. The largest average household size is found in Waianae, partly because over 35% of its population is under 18 years of age. East Honolulu's population has the highest median age as well as homeownership rate. While about 70% of us speak English at home, the rest of us are more comfortable speaking another language, with varying levels of proficiency in English.

These profiles were compiled from the 2000 U. S. Census. While this report organizes the data by the eight development plan and *sustainable* communities plan regions, it is also available by neighborhood board areas, city council districts and various other geographic areas. For more information, or to share suggestions for improvement, please call our Planning Division at 527-6058.

ERIC G. CRISPIN, AIA, DIRECTOR
Department of Planning and Permitting

Profile 1
General Demographic Characteristics: 2000
by Development Plan Area

Subject	Oahu Total		Primary Urban Center		Ewa		Central Oahu		East Honolulu		Koolaupoko		Koolauloa		North Shore		Waianae	
	Number	%	Number	%	Number	%	Number	%	Number	%	Number	%	Number	%	Number	%	Number	%
Total population	876,156	100.0	419,333	100.0	68,718	100.0	148,186	100.0	46,735	100.0	117,999	100.0	14,546	100.0	18,380	100.0	42,259	100.0
In military areas	70,945	8.1	34,197	8.2	5,074	7.4	17,148	11.6	17	0.0	11,834	10.0	0	0.0	2,606	14.2	69	0.2
SEX AND AGE																		
Male	440,518	50.3	209,067	49.9	34,591	50.3	75,621	51.0	23,019	49.3	60,327	51.1	7,119	48.9	9,641	52.5	21,133	50.0
Female	435,638	49.7	210,266	50.1	34,127	49.7	72,565	49.0	23,716	50.7	57,672	48.9	7,427	51.1	8,739	47.5	21,126	50.0
Under 5 years	56,849	6.5	22,284	5.3	6,273	9.1	12,089	8.2	2,170	4.6	7,569	6.4	1,198	8.2	1,511	8.2	3,755	8.9
5 - 14 years	117,999	13.5	46,581	11.1	12,573	18.3	23,227	15.7	5,595	12.0	16,614	14.1	2,664	18.3	2,422	13.2	8,323	19.7
15 - 19 years	57,176	6.5	23,947	5.7	4,562	6.6	10,328	7.0	2,893	6.2	8,716	7.4	1,431	9.8	1,273	6.9	4,026	9.5
20 - 24 years	65,376	7.5	30,775	7.3	4,115	6.0	12,117	8.2	1,806	3.9	10,211	8.7	1,410	9.7	1,835	10.0	3,107	7.4
25 - 64 years	461,019	52.6	224,789	53.6	36,526	53.2	76,601	51.7	26,469	56.6	60,879	51.6	6,652	45.7	9,465	51.5	19,638	46.5
65 - 84 years	104,978	12.0	62,552	14.9	4,325	6.3	12,463	8.4	7,115	15.2	12,678	10.7	1,036	7.1	1,681	9.1	3,128	7.4
85 years and over	12,759	1.5	8,405	2.0	344	0.5	1,361	0.9	687	1.5	1,332	1.1	155	1.1	193	1.1	282	0.7
Median age (years)	35.7	-	38.4	-	31.2	-	31.7	-	43.4	-	35.3	-	27.6	-	31.3	-	28.5	-
18 years and over	667,398	76.2	336,870	80.3	46,949	68.3	106,681	72.0	37,028	79.2	88,709	75.2	9,813	67.5	13,720	74.6	27,628	65.4
Male	333,139	38.0	166,767	39.8	23,412	34.1	54,276	36.6	18,028	38.6	45,230	38.3	4,721	32.5	7,235	39.4	13,470	31.9
Female	334,259	38.2	170,103	40.6	23,537	34.3	52,405	35.4	19,000	40.7	43,479	36.8	5,092	35.0	6,485	35.3	14,158	33.5
21 years and over	631,039	72.0	320,598	76.5	44,559	64.8	100,073	67.5	35,690	76.4	82,867	70.2	8,966	61.6	12,821	69.8	25,465	60.3
62 years and over	136,945	15.6	81,156	19.4	5,830	8.5	16,299	11.0	9,138	19.6	16,652	14.1	1,481	10.2	2,204	12.0	4,185	9.9
65 years and over	117,737	13.4	70,957	16.9	4,669	6.8	13,824	9.3	7,802	16.7	14,010	11.9	1,191	8.2	1,874	10.2	3,410	8.1

Profile 1
General Demographic Characteristics: 2000
by Development Plan Area

Subject	Oahu Total		Primary Urban Center		Ewa		Central Oahu		East Honolulu		Koolaupoko		Koolauloa		North Shore		Waianae	
	Number	%	Number	%	Number	%	Number	%	Number	%	Number	%	Number	%	Number	%	Number	%
RACE																		
One Race	701,532	80.1	354,399	84.5	52,076	75.8	118,861	80.2	39,284	84.1	87,851	74.5	10,086	69.3	13,930	75.8	25,045	59.3
White	186,484	21.3	80,613	19.2	12,677	18.4	26,053	17.6	13,312	28.5	38,965	33.0	3,431	23.6	6,696	36.4	4,737	11.2
Black or African American	20,619	2.4	8,976	2.1	1,565	2.3	6,592	4.4	150	0.3	2,187	1.9	77	0.5	607	3.3	465	1.1
American Indian and Alaska Native	2,178	0.2	905	0.2	147	0.2	464	0.3	61	0.1	364	0.3	31	0.2	65	0.4	141	0.3
Asian	403,371	46.0	229,950	54.8	31,618	46.0	72,653	49.0	23,750	50.8	31,459	26.7	1,737	11.9	5,111	27.8	7,093	16.8
Chinese	50,304	5.7	36,969	8.8	1,179	1.7	2,732	1.8	5,401	11.6	3,525	3.0	338	2.3	87	0.5	250	0.6
Filipino	121,533	13.9	53,030	12.6	20,764	30.2	35,483	23.9	263	0.6	4,336	3.7	0	0.0	3,042	16.6	4,167	9.9
Japanese	160,318	18.3	96,735	23.1	5,361	7.8	24,331	16.4	13,343	28.6	17,526	14.9	580	4.0	1,249	6.8	1,185	2.8
Korean	16,201	1.8	13,461	3.2	480	0.7	1,247	0.8	1,009	2.2	0	0.0	0	0.0	0	0.0	0	0.0
Vietnamese	3,434	0.4	3,430	0.8	0	0.0	0	0.0	0	0.0	0	0.0	0	0.0	0	0.0	0	0.0
Other Asian	51,581	5.9	26,325	6.3	3,834	5.6	8,860	6.0	3,735	8.0	6,072	5.1	820	5.6	733	4.0	1,491	3.5
Native Hawaiian and other Pacific Islander	77,680	8.9	29,577	7.1	5,172	7.5	10,158	6.9	1,776	3.8	13,131	11.1	4,695	32.3	1,032	5.6	12,139	28.7
Native Hawaiian	47,339	5.4	14,054	3.4	3,244	4.7	4,819	3.3	1,331	2.8	11,349	9.6	2,105	14.5	572	3.1	9,692	22.9
Samoan	11,743	1.3	4,869	1.2	1,035	1.5	2,824	1.9	0	0.0	109	0.1	1,259	8.7	109	0.6	1,642	3.9
Other Pacific Islander	18,598	2.1	10,654	2.5	893	1.3	2,515	1.7	445	1.0	1,673	1.4	1,331	9.2	351	1.9	805	1.9
Some other race	11,200	1.3	4,378	1.0	897	1.3	2,941	2.0	235	0.5	1,745	1.5	115	0.8	419	2.3	470	1.1
Two or more races	174,624	19.9	64,934	15.5	16,642	24.2	29,325	19.8	7,451	15.9	30,148	25.5	4,460	30.7	4,450	24.2	17,214	40.7
Race alone or in combination with other races:																		
White	308,838	35.2	124,756	29.8	24,171	35.2	46,076	31.1	19,320	41.3	61,997	52.5	6,552	45.0	9,874	53.7	16,092	38.1
Black or African American	29,764	3.4	12,773	3.0	2,543	3.7	8,566	5.8	358	0.8	3,234	2.7	210	1.4	864	4.7	1,216	2.9
American Indian and Alaska Native	15,921	1.8	6,177	1.5	1,389	2.0	2,825	1.9	553	1.2	2,663	2.3	399	2.7	500	2.7	1,415	3.3
Asian	539,384	61.6	281,720	67.2	44,978	65.5	96,629	65.2	29,845	63.9	53,924	45.7	4,572	31.4	8,385	45.6	19,331	45.7
Native Hawaiian and other Pacific Islander	189,292	21.6	68,340	16.3	15,484	22.5	27,380	18.5	5,661	12.1	33,989	28.8	8,337	57.3	3,808	20.7	26,293	62.2
Some other race	32,003	3.7	11,817	2.8	3,235	4.7	6,976	4.7	723	1.5	4,426	3.8	582	4.0	1,194	6.5	3,050	7.2
Hispanic or Latino (of any race)	58,729	6.7	21,155	5.0	6,180	9.0	12,467	8.4	1,425	3.0	8,961	7.6	955	6.6	1,697	9.2	5,889	13.9

Profile 1
General Demographic Characteristics: 2000
by Development Plan Area

Subject	Oahu Total		Primary Urban Center		Ewa		Central Oahu		East Honolulu		Koolaupoko		Koolauloa		North Shore		Waianae	
	Number	%	Number	%	Number	%	Number	%	Number	%	Number	%	Number	%	Number	%	Number	%
RELATIONSHIP																		
Total population	876,156	100.0	419,333	100.0	68,718	100.0	148,186	100.0	46,735	100.0	117,999	100.0	14,546	100.0	18,380	100.0	42,259	100.0
In households	845,211	96.5	402,338	95.9	68,298	99.4	142,041	95.9	46,586	99.7	112,372	95.2	13,793	94.8	17,980	97.8	41,803	98.9
Householder	286,450	32.7	152,989	36.5	18,932	27.6	42,789	28.9	16,188	34.6	35,442	30.0	3,682	25.3	5,893	32.1	10,535	24.9
Spouse	156,195	17.8	71,029	16.9	12,935	18.8	27,706	18.7	10,850	23.2	22,392	19.0	2,163	14.9	3,314	18.0	5,806	13.7
Child	253,649	29.0	106,224	25.3	24,545	35.7	48,107	32.5	13,366	28.6	35,422	30.0	5,199	35.7	5,470	29.8	15,316	36.2
Grandchild	34,430	3.9	13,767	3.3	2,885	4.2	5,295	3.6	1,479	3.2	5,720	4.8	821	5.6	808	4.4	3,655	8.6
Parent	14,015	1.6	7,251	1.7	1,297	1.9	2,356	1.6	691	1.5	1,470	1.2	149	1.0	204	1.1	597	1.4
Other relatives	48,273	5.5	23,348	5.6	4,308	6.3	8,320	5.6	1,796	3.8	5,477	4.6	878	6.0	887	4.8	3,259	7.7
Nonrelatives	52,199	6.0	27,730	6.6	3,396	4.9	7,468	5.0	2,216	4.7	6,449	5.5	901	6.2	1,404	7.6	2,635	6.2
In group quarters	30,945	3.5	16,995	4.1	420	0.6	6,145	4.1	149	0.3	5,627	4.8	753	5.2	400	2.2	456	1.1
Institutionalized	5,809	0.7	4,301	1.0	168	0.2	437	0.3	60	0.1	631	0.5	59	0.4	44	0.2	109	0.3
In nursing homes	2,171	0.2	1,718	0.4	0	0.0	119	0.1	52	0.1	141	0.1	46	0.3	0	0.0	95	0.2
HOUSEHOLD BY TYPE																		
Total households	286,450	100.0	152,989	100.0	18,932	100.0	42,789	100.0	16,188	100.0	35,442	100.0	3,682	100.0	5,893	100.0	10,535	100.0
Family households (families)	205,672	71.8	97,090	63.5	16,000	84.5	34,943	81.7	13,027	80.5	28,605	80.7	2,837	77.1	4,361	74.0	8,809	83.6
With own children under 18 years	91,022	31.8	37,510	24.5	9,325	49.3	18,696	43.7	4,791	29.6	12,507	35.3	1,526	41.4	2,102	35.7	4,565	43.3
Married-couple family	156,195	54.5	71,029	46.4	12,935	68.3	27,706	64.8	10,850	67.0	22,392	63.2	2,163	58.7	3,314	56.2	5,806	55.1
With own children under 18 years	70,442	24.6	27,872	18.2	7,750	40.9	15,027	35.1	4,090	25.3	9,925	28.0	1,206	32.8	1,602	27.2	2,970	28.2
Female householder, no husband present	35,138	12.3	18,727	12.2	2,064	10.9	5,068	11.8	1,555	9.6	4,437	12.5	462	12.5	682	11.6	2,143	20.3
With own children under 18 years	15,235	5.3	7,338	4.8	1,064	5.6	2,729	6.4	501	3.1	1,856	5.2	225	6.1	337	5.7	1,185	11.2
Non-family households	80,778	28.2	55,899	36.5	2,932	15.5	7,846	18.3	3,161	19.5	6,837	19.3	845	22.9	1,532	26.0	1,726	16.4
Living alone	61,963	21.6	44,066	28.8	2,032	10.7	5,905	13.8	2,268	14.0	4,814	13.6	602	16.3	1,023	17.4	1,253	11.9
65 years and over	20,021	7.0	14,390	9.4	388	2.0	1,618	3.8	984	6.1	1,796	5.1	184	5.0	275	4.7	386	3.7
Households with individuals under 18 years	108,247	37.8	44,762	29.3	10,755	56.8	21,482	50.2	5,616	34.7	15,217	42.9	1,831	49.7	2,511	42.6	6,073	57.6
Households with individuals 65 years and over	80,464	28.1	48,364	31.6	3,338	17.6	9,231	21.6	5,294	32.7	9,703	27.4	807	21.9	1,278	21.7	2,449	23.2
Average household size	2.95	-	2.63	-	3.61	-	3.32	-	2.88	-	3.17	-	3.75	-	3.05	-	3.97	-
Average family size	3.59	-	3.40	-	4.01	-	3.76	-	3.24	-	3.59	-	4.40	-	3.60	-	4.47	-
Median age of householder	48.7	-	50.2	-	42.4	-	44.5	-	54.0	-	49.9	-	48.3	-	45.7	-	47.7	-
Owner	54.6	-	59.6	-	44.8	-	49.4	-	56.2	-	54.7	-	52.8	-	54.7	-	52.1	-
Renter	40.9	-	42.3	-	36.2	-	36.9	-	45.5	-	39.4	-	43.1	-	37.0	-	41.5	-

Profile 1
General Demographic Characteristics: 2000
by Development Plan Area

Subject	Oahu Total		Primary Urban Center		Ewa		Central Oahu		East Honolulu		Koolaupoko		Koolauloa		North Shore		Waianae	
	Number	%	Number	%	Number	%	Number	%	Number	%	Number	%	Number	%	Number	%	Number	%
HOUSING OCCUPANCY AND TENURE																		
Total housing units	315,988	100.0	171,773	100.0	20,804	100.0	45,871	100.0	17,099	100.0	36,964	100.0	4,473	100.0	6,648	100.0	12,356	100.0
Occupied housing units	286,450	90.7	152,989	89.1	18,932	91.0	42,789	93.3	16,188	94.7	35,442	95.9	3,682	82.3	5,893	88.6	10,535	85.3
Owner occupied	156,290	49.5	70,200	40.9	13,257	63.7	25,860	56.4	13,086	76.5	23,398	63.3	1,801	40.3	2,595	39.0	6,093	49.3
Renter occupied	130,160	41.2	82,789	48.2	5,675	27.3	16,929	36.9	3,102	18.1	12,044	32.6	1,881	42.1	3,298	49.6	4,442	36.0
Vacant housing units	29,538	9.3	18,784	10.9	1,872	9.0	3,082	6.7	911	5.3	1,522	4.1	791	17.7	755	11.4	1,821	14.7
For seasonal, recreational or occasional use	6,856	2.2	4,849	2.8	67	0.3	74	0.2	447	2.6	287	0.8	416	9.3	304	4.6	412	3.3
Homeowner vacancy rate (%)	1.6	-	1.7	-	2.7	-	1.8	-	1.0	-	0.8	-	2.0	-	1.1	-	2.9	-
Rental vacancy rate (%)	8.6	-	9.6	-	5.9	-	6.2	-	3.6	-	4.1	-	9.9	-	5.7	-	16.7	-
Vacancy rate of housing available for sale or rent (%)	4.9	-	6.1	-	3.7	-	3.6	-	1.5	-	1.9	-	6.2	-	3.7	-	9.2	-
Homeownership rate (%)	54.6	-	45.9	-	70.0	-	60.4	-	80.8	-	66.0	-	48.9	-	44.0	-	57.8	-

Profile 2
Selected Social Characteristics: 2000
by Development Plan Area

Subject	Oahu Total		Primary Urban Center		Ewa		Central Oahu		East Honolulu		Koolaupoko		Koolauloa		North Shore		Waianae	
	Number	%	Number	%	Number	%	Number	%	Number	%	Number	%	Number	%	Number	%	Number	%
SCHOOL ENROLLMENT																		
Population 3 years and over	234,038	100.0	104,047	100.0	20,954	100.0	41,729	100.0	11,399	100.0	32,634	100.0	5,467	100.0	4,525	100.0	13,283	100.0
Nursery school, preschool	12,975	5.5	5,018	4.8	1,268	6.1	2,345	5.6	930	8.2	2,111	6.5	277	5.1	323	7.1	703	5.3
Kindergarten	12,113	5.2	4,925	4.7	1,316	6.3	2,489	6.0	522	4.6	1,743	5.3	233	4.3	224	5.0	661	5.0
Elementary school (grades 1-8)	95,339	40.7	37,435	36.0	10,013	47.8	18,710	44.8	4,553	39.9	13,699	42.0	2,170	39.7	1,981	43.8	6,778	51.0
High school (grades 9-12)	48,104	20.6	20,074	19.3	4,248	20.3	8,753	21.0	2,468	21.7	6,905	21.2	1,150	21.0	931	20.6	3,575	26.9
College or graduate school	65,507	28.0	36,595	35.2	4,109	19.6	9,432	22.6	2,926	25.7	8,176	25.1	1,637	29.9	1,066	23.6	1,566	11.8
EDUCATIONAL ATTAINMENT																		
Population 25 years and over	579,998	100.0	296,300	100.0	41,784	100.0	90,085	100.0	34,419	100.0	75,122	100.0	7,810	100.0	11,285	100.0	23,193	100.0
Less than 9th grade	42,087	7.3	25,421	8.6	3,076	7.4	7,551	8.4	798	2.3	2,294	3.1	480	6.1	977	8.7	1,490	6.4
9th to 12th grade, no diploma	45,801	7.9	24,534	8.3	3,658	8.8	6,309	7.0	1,313	3.8	4,536	6.0	839	10.7	978	8.7	3,634	15.7
High school graduate (includes equivalency)	161,348	27.8	80,985	27.3	11,602	27.8	24,751	27.5	6,755	19.6	21,366	28.4	2,060	26.4	3,319	29.4	10,510	45.3
Some college, no degree	123,521	21.3	60,163	20.3	10,337	24.7	20,961	23.3	6,672	19.4	16,442	21.9	1,919	24.6	2,796	24.8	4,231	18.2
Associate degree	45,595	7.9	21,860	7.4	4,052	9.7	8,978	10.0	2,506	7.3	5,583	7.4	467	6.0	722	6.4	1,427	6.2
Bachelor's degree	109,571	18.9	55,816	18.8	7,017	16.8	16,328	18.1	10,054	29.2	15,876	21.1	1,338	17.1	1,728	15.3	1,414	6.1
Graduate or professional degree	52,075	9.0	27,521	9.3	2,042	4.9	5,207	5.8	6,321	18.4	9,025	12.0	707	9.1	765	6.8	487	2.1
% high school graduate or higher	84.8	-	83.1	-	83.9	-	84.6	-	93.9	-	90.9	-	83.1	-	82.7	-	77.9	-
% bachelor's degree or higher	27.9	-	28.1	-	21.7	-	23.9	-	47.6	-	33.1	-	26.2	-	22.1	-	8.2	-
MARITAL STATUS																		
Population 15 years and over	701,668	100.0	350,640	100.0	50,382	100.0	112,698	100.0	38,914	100.0	93,730	100.0	10,685	100.0	14,403	100.0	30,216	100.0
Never married	215,344	30.7	113,176	32.3	13,859	27.5	32,270	28.6	9,126	23.5	27,899	29.8	3,671	34.4	4,418	30.7	10,925	36.2
Now married, except separated	374,352	53.4	173,373	49.4	30,473	60.5	65,677	58.3	24,400	62.7	52,496	56.0	5,629	52.7	7,839	54.4	14,465	47.9
Separated	11,154	1.6	6,205	1.8	708	1.4	1,761	1.6	297	0.8	1,194	1.3	159	1.5	238	1.7	592	2.0
Widowed	41,670	5.9	24,372	7.0	2,107	4.2	5,105	4.5	2,306	5.9	4,832	5.2	573	5.4	696	4.8	1,679	5.6
Female	33,968	4.8	19,969	5.7	1,717	3.4	4,144	3.7	1,912	4.9	3,907	4.2	433	4.1	548	3.8	1,338	4.4
Divorced	59,148	8.4	33,514	9.6	3,235	6.4	7,885	7.0	2,785	7.2	7,309	7.8	653	6.1	1,212	8.4	2,555	8.5
Female	33,336	4.8	18,749	5.3	1,811	3.6	4,359	3.9	1,762	4.5	4,265	4.6	398	3.7	603	4.2	1,389	4.6
VETERAN STATUS																		
Civilian population 18 years and over	630,076	100.0	322,032	100.0	44,676	100.0	95,626	100.0	36,923	100.0	81,179	100.0	9,790	100.0	12,390	100.0	27,460	100.0
Civilian veterans	88,177	14.0	43,486	13.5	5,997	13.4	14,448	15.1	5,344	14.5	12,714	15.7	939	9.6	1,509	12.2	3,740	13.6
DISABILITY STATUS OF THE CIVILIAN NONINSTITUTIONALIZED POPULATION																		
Population 5 to 20 years	181,581	100.0	74,436	100.0	17,595	100.0	34,220	100.0	8,659	100.0	25,783	100.0	4,276	100.0	3,832	100.0	12,780	100.0
With a disability	11,824	6.5	4,791	6.4	1,279	7.3	2,246	6.6	491	5.7	1,652	6.4	269	6.3	225	5.9	871	6.8

Profile 2
Selected Social Characteristics: 2000
by Development Plan Area

Subject	Oahu Total		Primary Urban Center		Ewa		Central Oahu		East Honolulu		Koolaupoko		Koolauloa		North Shore		Waianae	
	Number	%	Number	%	Number	%	Number	%	Number	%	Number	%	Number	%	Number	%	Number	%
Population 21 to 64 years	477,572	100.0	232,907	100.0	37,756	100.0	76,669	100.0	27,769	100.0	62,785	100.0	7,760	100.0	9,743	100.0	22,183	100.0
With a disability	80,311	16.8	42,239	18.1	6,357	16.8	12,348	16.1	2,937	10.6	8,355	13.3	1,316	17.0	1,585	16.3	5,174	23.3
% employed	58.6	-	58.2	-	63.1	-	59.4	-	67.9	-	60.8	-	59.8	-	58.5	-	44.6	-
No disability	397,261	83.2	190,668	81.9	31,399	83.2	64,321	83.9	24,832	89.4	54,430	86.7	6,444	83.0	8,158	83.7	17,009	76.7
% employed	75.7	-	74.7	-	76.9	-	77.7	-	80.1	-	78.2	-	70.7	-	73.2	-	64.3	-
Population 65 years and over	115,946	100.0	69,783	100.0	4,579	100.0	13,571	100.0	7,906	100.0	13,865	100.0	1,167	100.0	1,856	100.0	3,219	100.0
With a disability	46,860	40.4	27,720	39.7	2,100	45.9	6,394	47.1	2,714	34.3	5,221	37.7	507	43.4	758	40.8	1,446	44.9
RESIDENCE IN 1995																		
Population 5 years and over	819,914	100.0	397,314	100.0	62,872	100.0	135,860	100.0	44,579	100.0	110,657	100.0	13,313	100.0	16,818	100.0	38,501	100.0
Same house in 1995	461,892	56.3	220,906	55.6	32,451	51.6	71,774	52.8	29,722	66.7	67,289	60.8	7,582	57.0	9,050	53.8	23,118	60.0
Different house in 1995	319,403	39.0	151,857	38.2	28,078	44.7	57,857	42.6	13,695	30.7	40,704	36.8	5,168	38.8	7,183	42.7	14,861	38.6
Same county	213,643	26.1	103,429	26.0	20,065	31.9	35,835	26.4	10,000	22.4	23,354	21.1	3,707	27.8	4,101	24.4	13,152	34.2
Different county	105,760	12.9	48,428	12.2	8,013	12.7	22,022	16.2	3,695	8.3	17,350	15.7	1,461	11.0	3,082	18.3	1,709	4.4
Same state	10,049	1.2	5,599	1.4	612	1.0	1,158	0.9	368	0.8	1,331	1.2	145	1.1	223	1.3	613	1.6
Different state	95,711	11.7	42,829	10.8	7,401	11.8	20,864	15.4	3,327	7.5	16,019	14.5	1,316	9.9	2,859	17.0	1,096	2.8
Elsewhere in 1995	38,619	4.7	24,551	6.2	2,343	3.7	6,229	4.6	1,162	2.6	2,664	2.4	563	4.2	585	3.5	522	1.4
NATIVITY AND PLACE OF BIRTH																		
Total Population	876,156	100.0	419,330	100.0	69,117	100.0	147,723	100.0	46,738	100.0	117,999	100.0	14,546	100.0	18,380	100.0	42,323	100.0
Native	707,910	80.8	319,058	76.1	53,249	77.0	118,770	80.4	39,901	85.4	109,656	92.9	12,235	84.1	15,925	86.6	39,116	92.4
Born in United States	681,898	77.8	306,053	73.0	50,909	73.7	113,637	76.9	38,981	83.4	107,040	90.7	11,689	80.4	15,446	84.0	38,143	90.1
State of residence	488,897	55.8	221,384	52.8	37,064	53.6	79,865	54.1	27,775	59.4	72,136	61.1	8,304	57.1	9,048	49.2	33,321	78.7
Different state	193,001	22.0	84,669	20.2	13,845	20.0	33,772	22.9	11,206	24.0	34,904	29.6	3,385	23.3	6,398	34.8	4,822	11.4
Born outside United States	26,012	3.0	13,005	3.1	2,340	3.4	5,133	3.5	920	2.0	2,616	2.2	546	3.8	479	2.6	973	2.3
Foreign born	168,246	19.2	100,272	23.9	15,868	23.0	28,953	19.6	6,837	14.6	8,343	7.1	2,311	15.9	2,455	13.4	3,207	7.6
Entered 1990 to March 2000	57,228	6.5	37,732	9.0	4,119	6.0	9,005	6.1	1,767	3.8	2,056	1.7	808	5.6	687	3.7	1,054	2.5
Naturalized citizen	102,311	11.7	58,085	13.9	10,968	15.9	19,104	12.9	4,173	8.9	5,285	4.5	1,238	8.5	1,531	8.3	1,927	4.6
Not a citizen	65,935	7.5	42,187	10.1	4,900	7.1	9,849	6.7	2,664	5.7	3,058	2.6	1,073	7.4	924	5.0	1,280	3.0
LANGUAGE SPOKEN AT HOME																		
Population 5 years and over	819,914	100.0	397,314	100.0	62,872	100.0	135,860	100.0	44,579	100.0	110,657	100.0	13,313	100.0	16,818	100.0	38,501	100.0
English only	583,116	71.1	258,883	65.2	43,830	69.7	96,306	70.9	35,639	79.9	94,705	85.6	9,494	71.3	13,177	78.4	31,082	80.7
Language other than English	236,798	28.9	138,431	34.8	19,042	30.3	39,554	29.1	8,940	20.1	15,952	14.4	3,819	28.7	3,641	21.6	7,419	19.3
Speak English less than "very well"	113,550	13.8	72,637	18.3	8,152	13.0	17,774	13.1	3,716	8.3	5,307	4.8	1,504	11.3	1,591	9.5	2,869	7.5
Spanish	13,304	1.6	5,943	1.5	935	1.5	2,659	2.0	395	0.9	2,359	2.1	196	1.5	375	2.2	442	1.1
Speak English less than "very well"	3,201	0.4	1,635	0.4	164	0.3	583	0.4	62	0.1	510	0.5	24	0.2	96	0.6	127	0.3
Other Indo-European languages	9,594	1.2	4,701	1.2	399	0.6	993	0.7	822	1.8	1,801	1.6	228	1.7	381	2.3	269	0.7
Speak English less than "very well"	2,328	0.3	1,213	0.3	83	0.1	240	0.2	118	0.3	447	0.4	37	0.3	99	0.6	91	0.2
Asian and Pacific Island languages	212,306	25.9	126,785	31.9	17,629	28.0	35,739	26.3	7,587	17.0	11,695	10.6	3,339	25.1	2,830	16.8	6,702	17.4
Speak English less than "very well"	107,508	13.1	69,477	17.5	7,883	12.5	16,887	12.4	3,506	7.9	4,325	3.9	1,405	10.6	1,380	8.2	2,645	6.9

Profile 3
Selected Economic Characteristics: 2000
by Development Plan Area

Subject	Oahu Total		Primary Urban Center		Ewa		Central Oahu		East Honolulu		Koolaupoko		Koolauloa		North Shore		Waianae	
	Number	%	Number	%	Number	%	Number	%	Number	%	Number	%	Number	%	Number	%	Number	%
EMPLOYMENT STATUS																		
Population 16 years and over	691,015	100.0	346,403	100.0	49,476	100.0	110,534	100.0	38,424	100.0	92,104	100.0	10,412	100.0	14,218	100.0	29,444	100.0
In labor force	447,320	64.7	213,295	61.6	34,982	70.7	77,317	69.9	25,297	65.8	62,959	68.4	6,627	63.6	9,490	66.7	17,353	58.9
Civilian labor force	408,638	59.1	197,718	57.1	32,199	65.1	66,374	60.0	25,110	65.3	55,359	60.1	6,580	63.2	8,161	57.4	17,137	58.2
Employed	383,148	55.4	185,633	53.6	30,460	61.6	62,260	56.3	24,308	63.3	52,267	56.7	6,041	58.0	7,599	53.4	14,580	49.5
Unemployed	25,490	3.7	12,085	3.5	1,739	3.5	4,114	3.7	802	2.1	3,092	3.4	539	5.2	562	4.0	2,557	8.7
% of civilian labor force	6.2	-	6.1	-	5.4	-	6.2	-	3.2	-	5.6	-	8.2	-	6.9	-	14.9	-
Armed Forces	38,682	5.6	15,577	4.5	2,783	5.6	10,943	9.9	187	0.5	7,600	8.3	47	0.5	1,329	9.3	216	0.7
Not in labor force	243,695	35.3	133,108	38.4	14,494	29.3	33,217	30.1	13,127	34.2	29,145	31.6	3,785	36.4	4,728	33.3	12,091	41.1
Females 16 years and over	346,036	100.0	174,946	100.0	24,802	100.0	54,068	100.0	19,694	100.0	45,234	100.0	5,351	100.0	6,723	100.0	15,218	100.0
In labor force	203,289	58.7	97,650	55.8	16,141	65.1	34,519	63.8	11,795	59.9	28,017	61.9	3,175	59.3	3,916	58.2	8,076	53.1
Civilian labor force	198,679	57.4	95,763	54.7	15,799	63.7	32,889	60.8	11,764	59.7	27,514	60.8	3,160	59.1	3,721	55.3	8,069	53.0
Employed	187,607	54.2	90,750	51.9	14,997	60.5	31,035	57.4	11,434	58.1	26,114	57.7	2,930	54.8	3,460	51.5	6,887	45.3
Own children under 6 years	63,495	100.0	24,766	100.0	7,130	100.0	13,461	100.0	2,614	100.0	8,604	100.0	1,351	100.0	1,688	100.0	3,881	100.0
All parents in family in labor force	38,528	60.7	14,306	57.8	4,467	62.7	8,468	62.9	1,875	71.7	5,617	65.3	743	55.0	873	51.7	2,179	56.1
COMMUTING TO WORK																		
Workers 16 years and over	412,250	100.0	196,977	100.0	32,316	100.0	71,175	100.0	24,019	100.0	58,818	100.0	5,907	100.0	8,724	100.0	14,314	100.0
Car, truck, or van -- drove alone	253,231	61.4	114,026	57.9	20,686	64.0	46,452	65.3	16,922	70.5	37,880	64.4	2,990	50.6	5,954	68.2	8,321	58.1
Car, truck, or van -- carpooled	80,009	19.4	36,057	18.3	7,397	22.9	14,272	20.1	4,866	20.3	11,028	18.7	1,321	22.4	1,405	16.1	3,663	25.6
Public transportation (including taxicab)	34,250	8.3	21,714	11.0	2,735	8.5	4,651	6.5	824	3.4	2,470	4.2	265	4.5	315	3.6	1,276	8.9
Walked	23,022	5.6	13,527	6.9	456	1.4	3,335	4.7	260	1.1	3,937	6.7	744	12.6	325	3.7	438	3.1
Other means	9,832	2.4	6,091	3.1	466	1.4	995	1.4	147	0.6	1,255	2.1	276	4.7	289	3.3	313	2.2
Worked at home	11,906	2.9	5,562	2.8	576	1.8	1,470	2.1	1,000	4.2	2,248	3.8	311	5.3	436	5.0	303	2.1
Mean travel time to work (minutes) ¹	27.3	-	23.0	-	36.8	-	29.6	-	29.9	-	28.0	-	30.7	-	32.9	-	41.9	-

Profile 3
Selected Economic Characteristics: 2000
by Development Plan Area

Subject	Oahu Total		Primary Urban Center		Ewa		Central Oahu		East Honolulu		Koolaupoko		Koolauloia		North Shore		Waianae	
	Number	%	Number	%	Number	%	Number	%	Number	%	Number	%	Number	%	Number	%	Number	%
Employed civilian population 16 years and over	383,148	100.0	185,633	100.0	30,460	100.0	62,260	100.0	24,308	100.0	52,267	100.0	6,041	100.0	7,599	100.0	14,580	100.0
OCCUPATION																		
Management, professional, and related occupations	129,513	33.8	61,507	33.1	8,388	27.5	19,226	30.9	12,172	50.1	20,598	39.4	2,138	35.4	2,301	30.3	3,183	21.8
Service occupations	75,149	19.6	38,469	20.7	6,676	21.9	12,314	19.8	2,924	12.0	8,463	16.2	1,468	24.3	1,630	21.5	3,205	22.0
Sales and office occupations	111,376	29.1	56,747	30.6	8,874	29.1	17,687	28.4	6,856	28.2	14,268	27.3	1,383	22.9	1,663	21.9	3,898	26.7
Farming, fishing, and forestry occupations	2,534	0.7	844	0.5	78	0.3	662	1.1	100	0.4	295	0.6	100	1.7	234	3.1	221	1.5
Construction, extraction, and maintenance occupations	30,860	8.1	12,653	6.8	3,010	9.9	6,127	9.8	1,193	4.9	4,590	8.8	543	9.0	851	11.2	1,893	13.0
Production, transportation, and material moving occupations	33,716	8.8	15,413	8.3	3,434	11.3	6,244	10.0	1,063	4.4	4,053	7.8	409	6.8	920	12.1	2,180	15.0
INDUSTRY																		
Agriculture, forestry, fishing and hunting, and mining	4,046	1.1	1,287	0.7	155	0.5	906	1.5	127	0.5	596	1.1	209	3.5	362	4.8	404	2.8
Construction	20,657	5.4	8,007	4.3	2,014	6.6	3,883	6.2	1,056	4.3	3,371	6.4	409	6.8	667	8.8	1,250	8.6
Manufacturing	14,494	3.8	6,958	3.7	1,522	5.0	3,028	4.9	488	2.0	1,426	2.7	106	1.8	312	4.1	654	4.5
Wholesale trade	13,211	3.4	5,981	3.2	1,001	3.3	2,470	4.0	1,008	4.1	1,834	3.5	80	1.3	204	2.7	633	4.3
Retail trade	46,914	12.2	23,668	12.7	3,977	13.1	7,871	12.6	2,882	11.9	5,233	10.0	424	7.0	938	12.3	1,921	13.2
Transportation and warehousing, and utilities	24,877	6.5	11,198	6.0	2,152	7.1	4,436	7.1	1,617	6.7	3,247	6.2	382	6.3	552	7.3	1,293	8.9
Information	10,515	2.7	5,057	2.7	736	2.4	1,710	2.7	887	3.6	1,696	3.2	97	1.6	136	1.8	196	1.3
Finance, insurance, real estate, and rental and leasing	28,643	7.5	14,068	7.6	2,369	7.8	4,298	6.9	2,577	10.6	3,963	7.6	255	4.2	335	4.4	778	5.3
Professional, scientific, management, administrative, and waste management services	37,837	9.9	19,447	10.5	2,610	8.6	4,944	7.9	3,186	13.1	5,111	9.8	474	7.8	738	9.7	1,327	9.1
Educational, health and social services	76,091	19.9	35,314	19.0	5,802	19.0	11,414	18.3	5,124	21.1	12,366	23.7	2,036	33.7	1,448	19.1	2,587	17.7
Arts, entertainment, recreation, accommodation and food services	52,743	13.8	30,085	16.2	3,633	11.9	7,584	12.2	2,653	10.9	5,012	9.6	942	15.6	1,037	13.6	1,797	12.3
Other services (except public administration)	17,308	4.5	8,922	4.8	1,242	4.1	2,592	4.2	823	3.4	2,543	4.9	245	4.1	256	3.4	685	4.7
Public administration	35,812	9.3	15,641	8.4	3,247	10.7	7,124	11.4	1,880	7.7	5,869	11.2	382	6.3	614	8.1	1,055	7.2
CLASS OF WORKER																		
Private wage and salary workers	271,476	70.9	133,783	72.1	22,199	72.9	43,834	70.4	16,816	69.2	34,649	66.3	4,378	72.5	5,262	69.2	10,555	72.4
Government workers	86,380	22.5	38,892	21.0	7,122	23.4	16,052	25.8	4,945	20.3	13,306	25.5	1,188	19.7	1,655	21.8	3,220	22.1
Self-employed workers in own not incorporated business	23,966	6.3	12,312	6.6	1,071	3.5	2,280	3.7	2,436	10.0	4,038	7.7	448	7.4	658	8.7	723	5.0
Unpaid family workers	1,326	0.3	646	0.3	68	0.2	94	0.2	111	0.5	274	0.5	27	0.4	24	0.3	82	0.6

Profile 3
Selected Economic Characteristics: 2000
by Development Plan Area

Subject	Oahu Total		Primary Urban Center		Ewa		Central Oahu		East Honolulu		Koolaupoko		Koolauloia		North Shore		Waianae	
	Number	%	Number	%	Number	%	Number	%	Number	%	Number	%	Number	%	Number	%	Number	%
INCOME IN 1999																		
Households	286,731	100.0	153,137	100.0	19,082	100.0	42,740	100.0	16,173	100.0	35,476	100.0	3,703	100.0	5,888	100.0	10,532	100.0
Less than \$10,000	20,886	7.3	14,379	9.4	570	3.0	2,161	5.1	489	3.0	1,336	3.8	326	8.8	404	6.9	1,221	11.6
\$10,000 to \$14,999	11,769	4.1	7,708	5.0	380	2.0	1,260	2.9	262	1.6	906	2.6	211	5.7	329	5.6	713	6.8
\$15,000 to \$24,999	28,346	9.9	17,340	11.3	1,266	6.6	3,720	8.7	772	4.8	2,583	7.3	455	12.3	875	14.9	1,335	12.7
\$25,000 to \$34,999	31,830	11.1	19,372	12.7	1,831	9.6	4,473	10.5	744	4.6	3,045	8.6	490	13.2	742	12.6	1,133	10.8
\$35,000 to \$49,999	44,283	15.4	25,332	16.5	2,985	15.6	6,585	15.4	1,617	10.0	4,680	13.2	587	15.9	892	15.1	1,605	15.2
\$50,000 to \$74,999	59,104	20.6	28,157	18.4	5,507	28.9	10,159	23.8	3,124	19.3	7,894	22.3	816	22.0	1,134	19.3	2,313	22.0
\$75,000 to \$99,999	38,442	13.4	16,789	11.0	3,602	18.9	6,917	16.2	3,050	18.9	5,901	16.6	408	11.0	634	10.8	1,141	10.8
\$100,000 to \$149,999	35,275	12.3	15,579	10.2	2,349	12.3	5,981	14.0	3,402	21.0	6,215	17.5	319	8.6	630	10.7	800	7.6
\$150,000 to \$199,999	9,514	3.3	4,774	3.1	366	1.9	1,044	2.4	1,392	8.6	1,590	4.5	48	1.3	159	2.7	141	1.3
\$200,000 or more	7,282	2.5	3,707	2.4	226	1.2	440	1.0	1,321	8.2	1,326	3.7	43	1.2	89	1.5	130	1.2
Median household income (\$)	52,280	-	44,947	-	60,811	-	57,144	-	83,031	-	66,135	-	44,337	-	45,000	-	42,921	-
With earnings	239,649	83.6	122,164	79.8	17,894	93.8	38,358	89.7	13,722	84.8	30,889	87.1	3,151	85.1	5,058	85.9	8,413	79.9
Mean earnings (\$)	60,958	-	56,233	-	63,419	-	60,514	-	90,937	-	70,536	-	49,823	-	55,022	-	50,031	-
With Social Security income	78,836	27.5	46,298	30.2	3,213	16.8	8,914	20.9	5,330	33.0	10,134	28.6	863	23.3	1,374	23.3	2,710	25.7
Mean Social Security income (\$)	11,622	-	11,736	-	9,934	-	10,486	-	13,583	-	12,187	-	11,264	-	10,870	-	9,926	-
With Supplemental Security income	10,067	3.5	5,648	3.7	552	2.9	1,595	3.7	258	1.6	920	2.6	153	4.1	178	3.0	763	7.2
Mean Supplemental Security income (\$)	6,507	-	6,658	-	7,309	-	6,033	-	6,795	-	6,281	-	6,123	-	5,846	-	6,207	-
With public assistance income	19,423	6.8	9,450	6.2	1,297	6.8	2,844	6.7	397	2.5	1,856	5.2	432	11.7	463	7.9	2,684	25.5
Mean public assistance income (\$)	4,647	-	4,094	-	4,811	-	4,600	-	5,750	-	4,345	-	5,165	-	4,447	-	6,561	-
With retirement income	62,909	21.9	33,945	22.2	3,173	16.6	8,344	19.5	4,580	28.3	8,892	25.1	685	18.5	1,133	19.2	2,157	20.5
Mean retirement income (\$)	21,281	-	21,339	-	16,840	-	18,839	-	27,295	-	23,258	-	17,756	-	19,844	-	17,301	-
Families	207,147	100.0	97,777	100.0	16,208	100.0	35,026	100.0	13,045	100.0	28,899	100.0	2,897	100.0	4,389	100.0	8,906	100.0
Less than \$10,000	8,742	4.2	4,824	4.9	409	2.5	1,181	3.4	220	1.7	688	2.4	185	6.4	221	5.0	1,014	11.4
\$10,000 to \$14,999	6,117	3.0	3,357	3.4	281	1.7	997	2.8	84	0.6	547	1.9	142	4.9	200	4.6	509	5.7
\$15,000 to \$24,999	17,019	8.2	8,945	9.1	963	5.9	2,867	8.2	439	3.4	1,718	5.9	317	10.9	629	14.3	1,141	12.8
\$25,000 to \$34,999	20,455	9.9	11,050	11.3	1,523	9.4	3,462	9.9	444	3.4	2,198	7.6	350	12.1	570	13.0	858	9.6
\$35,000 to \$49,999	30,792	14.9	15,812	16.2	2,438	15.0	5,120	14.6	1,247	9.6	3,738	12.9	460	15.9	622	14.2	1,355	15.2
\$50,000 to \$74,999	47,420	22.9	20,898	21.4	4,784	29.5	8,655	24.7	2,489	19.1	6,827	23.6	715	24.7	904	20.6	2,148	24.1
\$75,000 to \$99,999	31,967	15.4	13,034	13.3	3,284	20.3	6,112	17.4	2,575	19.7	5,075	17.6	354	12.2	537	12.2	996	11.2
\$100,000 to \$149,999	30,593	14.8	13,028	13.3	2,015	12.4	5,447	15.6	3,030	23.2	5,599	19.4	293	10.1	513	11.7	668	7.5
\$150,000 to \$199,999	8,183	4.0	3,963	4.1	334	2.1	877	2.5	1,345	10.3	1,388	4.8	44	1.5	122	2.8	110	1.2
\$200,000 or more	5,859	2.8	2,866	2.9	177	1.1	308	0.9	1,172	9.0	1,121	3.9	37	1.3	71	1.6	107	1.2
Median family income (\$)	60,142	-	55,426	-	62,279	-	60,676	-	90,529	-	70,379	-	49,826	-	48,958	-	44,767	-
Per capita income (\$) ¹	21,998	-	22,641	-	18,734	-	19,271	-	35,259	-	24,368	-	14,678	-	19,030	-	13,029	-

Profile 3
Selected Economic Characteristics: 2000
by Development Plan Area

Subject	Oahu Total		PrimaryUrban Center		Ewa		Central Oahu		East Honolulu		Koolaupoko		Koolauloia		North Shore		Waianae	
	Number below poverty level	% Below poverty level	Number below poverty level	% Below poverty level	Number below poverty level	% Below poverty level	Number below poverty level	% Below poverty level	Number below poverty level	% Below poverty level	Number below poverty level	% Below poverty level	Number below poverty level	% Below poverty level	Number below poverty level	% Below poverty level	Number below poverty level	% Below poverty level
POVERTY STATUS IN 1999																		
Families	14,477	7.0	7,598	7.8	711	4.4	2,117	6.0	312	2.4	1,128	3.9	376	13.0	467	10.6	1,768	19.9
With related children under 18 years	11,108	10.3	5,415	12.1	617	5.6	1,793	8.5	213	3.8	943	6.1	308	16.3	336	13.7	1,483	24.6
With related children under 5 years	5,476	12.3	2,499	14.4	310	6.1	981	10.8	35	1.9	438	7.1	172	19.7	226	17.7	815	27.9
Families with female householder, no husband present	6,616	19.2	3,343	18.1	376	17.5	1,034	21.8	120	8.2	572	13.3	116	26.3	167	28.6	888	37.8
With related children under 18 years	5,671	28.3	2,745	28.4	362	24.7	915	29.8	103	14.1	531	20.4	98	29.8	109	30.9	808	45.1
With related children under 5 years	2,441	34.2	1,110	36.1	144	22.4	408	33.0	7	4.1	209	23.8	54	39.7	65	40.4	444	52.4
Individuals	83,937	9.9	46,407	11.5	3,763	5.5	11,563	8.1	1,772	3.8	6,471	5.7	2,389	17.3	2,426	13.5	9,146	21.9
18 years and over	57,782	9.0	34,244	10.5	2,233	4.7	7,294	7.2	1,362	3.7	4,509	5.4	1,483	16.1	1,659	12.4	4,998	18.1
65 years and over	8,614	7.4	5,905	8.5	290	6.3	1,263	9.3	141	1.8	406	2.9	130	11.1	146	7.9	333	10.3

Profile 4
Selected Housing Characteristics: 2000
by Development Area

Subject	Oahu Total		Primary Urban Center		Ewa		Central Oahu		East Honolulu		Koolaupoko		Koolauloa		North Shore		Waianae	
	Number	%	Number	%	Number	%	Number	%	Number	%	Number	%	Number	%	Number	%	Number	%
Total housing units	315,988	100.0	171,758	100.0	20,854	100.0	45,801	100.0	17,114	100.0	36,964	100.0	4,473	100.0	6,648	100.0	12,376	100.0
UNITS IN STRUCTURE																		
1-unit, detached	141,851	44.9	53,745	31.3	12,757	61.2	23,258	50.8	12,418	72.6	25,189	68.1	2,773	62.0	4,101	61.7	7,610	61.5
1-unit, attached	31,134	9.9	14,427	8.4	2,512	12.0	5,373	11.7	1,526	8.9	4,296	11.6	560	12.5	1,034	15.6	1,406	11.4
2 units	7,166	2.3	4,234	2.5	170	0.8	845	1.8	140	0.8	639	1.7	276	6.2	516	7.8	346	2.8
3 or 4 units	16,520	5.2	8,376	4.9	1,024	4.9	4,113	9.0	337	2.0	1,709	4.6	220	4.9	360	5.4	381	3.1
5 to 9 units	23,184	7.3	11,507	6.7	2,879	13.8	6,004	13.1	488	2.9	1,562	4.2	179	4.0	130	2.0	435	3.5
10 to 19 units	17,033	5.4	11,403	6.6	1,172	5.6	2,742	6.0	202	1.2	851	2.3	131	2.9	175	2.6	357	2.9
20 or more units	78,417	24.8	67,688	39.4	272	1.3	3,410	7.4	1,976	11.5	2,666	7.2	311	7.0	303	4.6	1,791	14.5
Other	683	0.2	378	0.2	68	0.3	56	0.1	27	0.2	52	0.1	23	0.5	29	0.4	50	0.4
YEAR STRUCTURE BUILT																		
1999 to March 2000	4,580	1.4	1,869	1.1	906	4.3	1,067	2.3	124	0.7	367	1.0	51	1.1	90	1.4	106	0.9
1995 to 1998	17,121	5.4	6,126	3.6	3,452	16.6	3,943	8.6	909	5.3	874	2.4	117	2.6	566	8.5	1,134	9.2
1990 to 1994	24,643	7.8	6,922	4.0	6,004	28.8	7,045	15.4	899	5.3	1,973	5.3	233	5.2	622	9.4	945	7.6
1980 to 1989	41,340	13.1	18,858	11.0	2,489	11.9	9,324	20.4	2,381	13.9	4,880	13.2	874	19.5	1,243	18.7	1,291	10.4
1970 to 1979	83,844	26.5	48,789	28.4	3,324	15.9	10,446	22.8	5,746	33.6	8,442	22.8	1,480	33.1	1,281	19.3	4,336	35.0
1960 to 1969	71,224	22.5	42,996	25.0	2,664	12.8	6,951	15.2	4,198	24.5	10,068	27.2	724	16.2	1,047	15.7	2,576	20.8
1940 to 1959	59,351	18.8	35,783	20.8	1,777	8.5	5,972	13.0	2,658	15.5	9,394	25.4	712	15.9	1,444	21.7	1,611	13.0
1939 or earlier	13,885	4.4	10,415	6.1	238	1.1	1,053	2.3	199	1.2	966	2.6	282	6.3	355	5.3	377	3.0
ROOMS																		
1 room	25,589	8.1	22,005	12.8	342	1.6	1,189	2.6	177	1.0	712	1.9	356	8.0	227	3.4	581	4.7
2 rooms	41,919	13.3	31,734	18.5	1,356	6.5	4,217	9.2	463	2.7	1,771	4.8	422	9.4	654	9.8	1,302	10.5
3 rooms	53,982	17.1	32,230	18.8	3,344	16.0	7,279	15.9	1,904	11.1	4,521	12.2	877	19.6	1,050	15.8	2,777	22.4
4 rooms	48,200	15.3	27,569	16.1	2,886	13.8	7,907	17.3	1,706	10.0	4,430	12.0	768	17.2	1,341	20.2	1,593	12.9
5 rooms	51,578	16.3	20,578	12.0	5,218	25.0	9,341	20.4	3,237	18.9	7,765	21.0	964	21.6	1,710	25.7	2,765	22.3
6 rooms	41,481	13.1	15,373	9.0	4,494	21.5	7,444	16.3	3,569	20.9	7,377	20.0	519	11.6	756	11.4	1,949	15.7
7 rooms	25,760	8.2	9,917	5.8	2,026	9.7	4,457	9.7	2,842	16.6	5,159	14.0	208	4.7	473	7.1	678	5.5
8 rooms	13,509	4.3	5,685	3.3	657	3.2	1,998	4.4	1,627	9.5	2,772	7.5	192	4.3	236	3.5	342	2.8
9 or more rooms	13,970	4.4	6,667	3.9	531	2.5	1,969	4.3	1,589	9.3	2,457	6.6	167	3.7	201	3.0	389	3.1
Median (rooms)	4.8	-	4.0	-	5.5	-	5.2	-	6.3	-	5.9	-	4.8	-	5.0	-	5.0	-

Profile 4
Selected Housing Characteristics: 2000
by Development Area

Subject	Oahu Total		Primary Urban Center		Ewa		Central Oahu		East Honolulu		Koolaupoko		Koolauloa		North Shore		Waianae	
	Number	%	Number	%	Number	%	Number	%	Number	%	Number	%	Number	%	Number	%	Number	%
Occupied housing units	286,450	100.0	152,977	100.0	18,974	100.0	42,720	100.0	16,200	100.0	35,442	100.0	3,682	100.0	5,893	100.0	10,562	100.0
YEAR HOUSEHOLDER MOVED INTO UNIT																		
1999 to March 2000	57,708	20.1	32,396	21.2	4,128	21.8	9,111	21.3	2,173	13.4	5,758	16.2	717	19.5	1,647	27.9	1,778	16.8
1995 to 1998	75,910	26.5	40,268	26.3	6,295	33.2	12,368	29.0	3,350	20.7	7,895	22.3	1,031	28.0	1,419	24.1	3,284	31.1
1990 to 1994	41,314	14.4	19,597	12.8	4,642	24.5	7,224	16.9	2,151	13.3	4,963	14.0	528	14.3	711	12.1	1,498	14.2
1980 to 1989	43,458	15.2	22,210	14.5	1,771	9.3	6,793	15.9	3,126	19.3	6,164	17.4	777	21.1	910	15.4	1,707	16.2
1970 to 1979	31,455	11.0	16,227	10.6	1,424	7.5	4,039	9.5	2,666	16.5	4,832	13.6	378	10.3	484	8.2	1,405	13.3
1969 or earlier	36,605	12.8	22,279	14.6	714	3.8	3,185	7.5	2,734	16.9	5,830	16.4	251	6.8	722	12.3	890	8.4
VEHICLES AVAILABLE																		
None	36,614	12.8	28,175	18.4	870	4.6	3,129	7.3	585	3.6	1,928	5.4	371	10.1	430	7.3	1,126	10.7
1	107,393	37.5	66,265	43.3	5,574	29.4	13,831	32.4	4,088	25.2	10,178	28.7	1,550	42.1	2,208	37.5	3,699	35.0
2	97,752	34.1	41,507	27.1	8,482	44.7	17,481	40.9	7,860	48.5	15,539	43.8	1,191	32.3	2,100	35.6	3,592	34.0
3 or more	44,691	15.6	17,030	11.1	4,048	21.3	8,279	19.4	3,667	22.6	7,797	22.0	570	15.5	1,155	19.6	2,145	20.3
HOUSE HEATING FUEL																		
Electricity	147,304	51.4	79,438	51.9	9,075	47.8	24,606	57.6	7,729	47.7	16,112	45.5	1,855	50.4	2,338	39.7	6,151	58.2
Solar energy	3,348	1.2	1,394	0.9	368	1.9	433	1.0	246	1.5	600	1.7	50	1.4	86	1.5	171	1.6
Other fuel	14,357	5.0	8,469	5.5	1,830	9.6	1,582	3.7	375	2.3	1,026	2.9	160	4.3	175	3.0	740	7.0
No fuel used	121,441	42.4	63,676	41.6	7,701	40.6	16,099	37.7	7,850	48.5	17,704	50.0	1,617	43.9	3,294	55.9	3,500	33.1
SELECTED CHARACTERISTICS																		
Lacking complete plumbing facilities	1,760	0.6	1,052	0.7	57	0.3	147	0.3	38	0.2	170	0.5	96	2.6	49	0.8	151	1.4
Lacking complete kitchen facilities	3,391	1.2	2,198	1.4	77	0.4	212	0.5	174	1.1	415	1.2	116	3.2	100	1.7	99	0.9
No telephone service	4,981	1.7	3,091	2.0	132	0.7	591	1.4	30	0.2	284	0.8	150	4.1	88	1.5	615	5.8

Profile 4
Selected Housing Characteristics: 2000
by Development Area

Subject	Oahu Total		Primary Urban Center		Ewa		Central Oahu		East Honolulu		Koolauapoko		Koolauloa		North Shore		Waianae	
	Number	%	Number	%	Number	%	Number	%	Number	%	Number	%	Number	%	Number	%	Number	%
OCCUPANTS PER ROOM																		
Occupied housing units	286,450	100.0	152,977	100.0	18,974	100.0	42,720	100.0	16,200	100.0	35,442	100.0	3,682	100.0	5,893	100.0	10,562	100.0
1.00 or less workers	240,598	84.0	127,978	83.7	15,157	79.9	35,532	83.2	15,312	94.5	31,688	89.4	2,578	70.0	4,955	84.1	7,398	70.0
1.01 to 1.50	22,333	7.8	10,517	6.9	2,185	11.5	4,113	9.6	653	4.0	2,236	6.3	565	15.3	512	8.7	1,552	14.7
1.51 or more	23,519	8.2	14,482	9.5	1,632	8.6	3,075	7.2	235	1.5	1,518	4.3	539	14.6	426	7.2	1,612	15.3
Specified owner-occupied units	113,155	100.0	42,729	100.0	10,320	100.0	19,593	100.0	11,146	100.0	20,164	100.0	1,523	100.0	2,328	100.0	5,352	100.0
VALUE																		
Less than \$50,000	1,209	1.1	505	1.2	121	1.2	165	0.8	84	0.8	115	0.6	31	2.0	24	1.0	164	3.1
\$50,000 to \$99,999	1,888	1.7	458	1.1	147	1.4	201	1.0	77	0.7	207	1.0	47	3.1	45	1.9	706	13.2
\$100,000 to \$149,999	4,723	4.2	973	2.3	796	7.7	832	4.2	66	0.6	556	2.8	102	6.7	149	6.4	1,249	23.3
\$150,000 to \$199,999	9,738	8.6	1,918	4.5	2,188	21.2	2,031	10.4	166	1.5	1,063	5.3	249	16.3	341	14.6	1,782	33.3
\$200,000 to \$299,999	36,253	32.0	10,802	25.3	5,598	54.2	9,981	50.9	1,440	12.9	6,057	30.0	592	38.9	839	36.0	944	17.6
\$300,000 to \$499,999	44,625	39.4	20,200	47.3	1,369	13.3	5,993	30.6	6,010	53.9	9,643	47.8	407	26.7	632	27.1	371	6.9
\$500,000 to \$999,999	13,261	11.7	7,285	17.0	95	0.9	361	1.8	2,843	25.5	2,243	11.1	79	5.2	243	10.4	112	2.1
\$1,000,000 or more	1,458	1.3	588	1.4	6	0.1	29	0.1	460	4.1	280	1.4	16	1.1	55	2.4	24	0.4
Median (\$)	309,021	-	351,823	-	230,884	-	267,441	-	409,598	-	329,704	-	252,646	-	266,667	-	162,478	-
MORTGAGE STATUS AND SELECTED MONTHLY OWNER COSTS																		
With a mortgage	81,606	72.1	25,269	59.1	9,417	91.3	16,480	84.1	8,225	73.8	15,138	75.1	1,196	78.5	1,611	69.2	4,270	79.8
Less than \$300	377	0.3	129	0.3	21	0.2	101	0.5	-	-	83	0.4	7	0.5	2	0.1	34	0.6
\$300 to \$499	1,789	1.6	603	1.4	106	1.0	216	1.1	146	1.3	379	1.9	45	3.0	33	1.4	261	4.9
\$500 to \$699	3,305	2.9	1,126	2.6	231	2.2	460	2.3	181	1.6	665	3.3	65	4.3	122	5.2	455	8.5
\$700 to \$999	6,875	6.1	2,471	5.8	560	5.4	963	4.9	448	4.0	1,282	6.4	152	10.0	197	8.5	802	15.0
\$1,000 to \$1,499	16,472	14.6	5,028	11.8	2,407	23.3	3,163	16.1	1,060	9.5	2,843	14.1	300	19.7	349	15.0	1,322	24.7
\$1,500 to \$1,999	19,525	17.3	5,086	11.9	3,190	30.9	5,022	25.6	1,296	11.6	3,477	17.2	296	19.4	395	17.0	763	14.3
\$2,000 or more	33,263	29.4	10,826	25.3	2,902	28.1	6,555	33.5	5,094	45.7	6,409	31.8	331	21.7	513	22.0	633	11.8
Median (\$)	1,790	1.6	1,806	4.2	1,699	16.5	1,816	9.3	2,269	20.4	1,817	9.0	1,543	101.3	1,616	69.4	1,173	21.9
Not mortgaged	31,549	27.9	17,460	40.9	903	8.8	3,113	15.9	2,921	26.2	5,026	24.9	327	21.5	717	30.8	1,082	20.2
Median (\$)	289	-	294	-	256	-	259	-	314	-	292	-	268	-	234	-	268	-

Profile 4
Selected Housing Characteristics: 2000
by Development Area

Subject	Oahu Total		Primary Urban Center		Ewa		Central Oahu		East Honolulu		Koolaupoko		Koolauloa		North Shore		Waianae	
	Number	%	Number	%	Number	%	Number	%	Number	%	Number	%	Number	%	Number	%	Number	%
SELECTED MONTHLY OWNER COSTS AS A PERCENTAGE OF HOUSEHOLD INCOME IN 1999																		
Less than 15.0%	40,016	35.4	19,803	46.3	1,622	15.7	4,746	24.2	3,770	33.8	7,176	35.6	400	26.3	869	37.3	1,630	30.5
15.0 to 19.9%	12,922	11.4	4,746	11.1	1,153	11.2	2,266	11.6	1,325	11.9	2,371	11.8	139	9.1	221	9.5	701	13.1
20.0 to 24.9%	13,352	11.8	4,075	9.5	1,340	13.0	2,979	15.2	1,261	11.3	2,635	13.1	144	9.5	251	10.8	667	12.5
25.0 to 29.9%	12,379	10.9	3,509	8.2	1,684	16.3	2,668	13.6	1,364	12.2	2,125	10.5	190	12.5	263	11.3	576	10.8
30.0 to 34.9%	8,960	7.9	2,526	5.9	1,429	13.8	2,012	10.3	723	6.5	1,546	7.7	134	8.8	142	6.1	448	8.4
35.0% or more	24,904	22.0	7,834	18.3	3,067	29.7	4,869	24.9	2,614	23.5	4,227	21.0	498	32.7	563	24.2	1,232	23.0
Not computed	622	0.5	236	0.6	25	0.2	53	0.3	89	0.8	84	0.4	18	1.2	19	0.8	98	1.8
Specified owner-occupied units	129,907	100.0	82,689	100.0	5,686	100.0	16,907	100.0	3,068	100.0	12,006	100.0	1,862	100.0	3,250	100.0	4,439	100.0
GROSS RENT																		
Less than \$200	4,501	3.5	3,096	3.7	190	3.3	672	4.0	7	0.2	109	0.9	41	2.2	161	5.0	225	5.1
\$200 to \$299	3,324	2.6	2,335	2.8	95	1.7	334	2.0	30	1.0	201	1.7	88	4.7	76	2.3	165	3.7
\$300 to \$499	9,265	7.1	6,523	7.9	125	2.2	1,077	6.4	78	2.5	412	3.4	271	14.6	226	7.0	553	12.5
\$500 to \$749	30,991	23.9	22,595	27.3	656	11.5	3,409	20.2	97	3.2	1,814	15.1	422	22.7	517	15.9	1,481	33.4
\$750 to \$999	28,973	22.3	19,933	24.1	1,382	24.3	3,255	19.3	200	6.5	2,146	17.9	439	23.6	637	19.6	981	22.1
\$1,000 to \$1,499	24,544	18.9	13,377	16.2	1,433	25.2	3,299	19.5	992	32.3	3,782	31.5	366	19.7	563	17.3	732	16.5
\$1,500 or more	9,257	7.1	4,174	5.0	464	8.2	1,007	6.0	1,425	46.4	1,870	15.6	77	4.1	219	6.7	21	0.5
No cash rent	19,052	14.7	10,656	12.9	1,341	23.6	3,854	22.8	239	7.8	1,672	13.9	158	8.5	851	26.2	281	6.3
Median (\$)	802	-	764	-	943	-	824	-	1,506	-	1,053	-	765	-	835	-	680	-
GROSS RENT AS A PERCENTAGE OF HOUSEHOLD INCOME IN 1999																		
Less than 15.0%	16,906	13.0	11,061	13.4	551	9.7	2,021	12.0	337	11.0	1,372	11.4	361	19.4	514	15.8	689	15.5
15.0 to 19.9%	15,468	11.9	9,933	12.0	690	12.1	2,022	12.0	374	12.2	1,624	13.5	187	10.0	242	7.4	396	8.9
20.0 to 24.9%	14,867	11.4	9,553	11.6	577	10.1	1,890	11.2	464	15.1	1,462	12.2	225	12.1	279	8.6	417	9.4
25.0 to 29.9%	12,958	10.0	8,485	10.3	623	11.0	1,614	9.5	347	11.3	1,188	9.9	180	9.7	219	6.7	302	6.8
30.0 to 34.9%	9,771	7.5	6,327	7.7	406	7.1	1,137	6.7	307	10.0	957	8.0	124	6.7	217	6.7	296	6.7
35.0% or more	37,543	28.9	23,850	28.8	1,488	26.2	4,173	24.7	972	31.7	3,664	30.5	606	32.5	866	26.6	1,924	43.3
Not computed	22,394	17.2	13,480	16.3	1,351	23.8	4,050	24.0	267	8.7	1,739	14.5	179	9.6	913	28.1	415	9.3